



New hours

Effective January 5, 2014

Sunday	Closed
Monday	Closed
Tuesday	10 am–10 pm
Wednesday	10 am–5 pm
Thursday	1–10 pm
Friday	10 am–5 pm
Saturday	9:30 am–4:30 pm

Happy Holidays!

We look forward to serving your stained and fused glass needs.

Elizabeth, Melanie, Anna & Wendy

Welcome in the New Year with Glasstronomy

A new year brings a moment of retrospect, the opportunity to learn and the feeling of inspiration for the possibilities ahead.

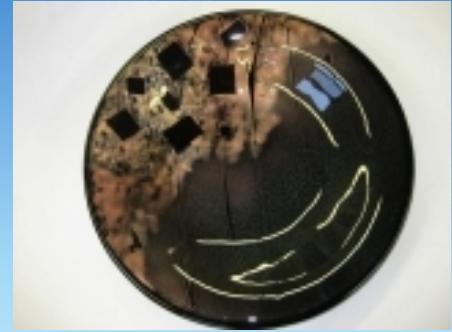
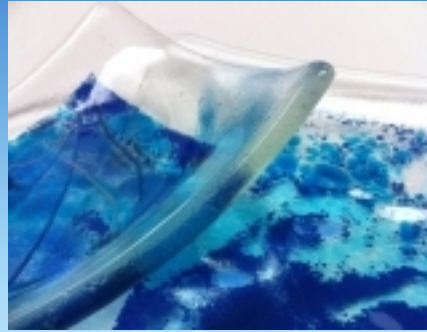
This past year at the Studio saw us grow in both community and product. New faces, shared spaces and tons of positive support, our members brought the best face to our place.

We created our members' stained and fused glass library. Our craft resources can now be borrowed, a month at a time, by all Glasstronomy members. We have expanded our craft market. Along with the basic supplies needed for stained and fused glass, such as came, chemicals and frit, we now offer System 96 sheet glass and a variety of stained glass in a larger spectrum of colour.

Our education program has continued to develop and we are now pleased to offer our daytime art glass units. Coming in February, the Studio will hold art glass courses Thursday afternoons from 1-4 pm in both stained and fused glass. Our course calendar can be viewed at glasstronomystudios.ca. The winter/spring update will be available soon!

So sigh, smile and step forward with inspiration, we'll be here to greet you.

Melanie & Elizabeth



Courses

B208 | Beginner / intermediate glass fusing: bowls, bowls, bowls

Thursdays,
January 9, 16, 23, 30
7–10 pm | \$295

Workshops

G141 | Fused dishes
Saturday, January 11
10 am–4 pm | \$195

G142 | Wire-wrapped donuts
Saturday, January 18
10 am–4 pm | \$175

G109 | Fusing with Mica
Saturday, January 25
10 am–12 pm | \$75

I327 | Jewellery without bails
Saturday, January 25
1–4 pm | \$60

All courses and workshops include materials. HST not included in the listed price.

Visit glasstronomystudios.ca for more details on our courses and workshops.

Our mailing address is

Glasstronomy Studios
2600 John St., Unit 108
Markham ON L3R 3W3